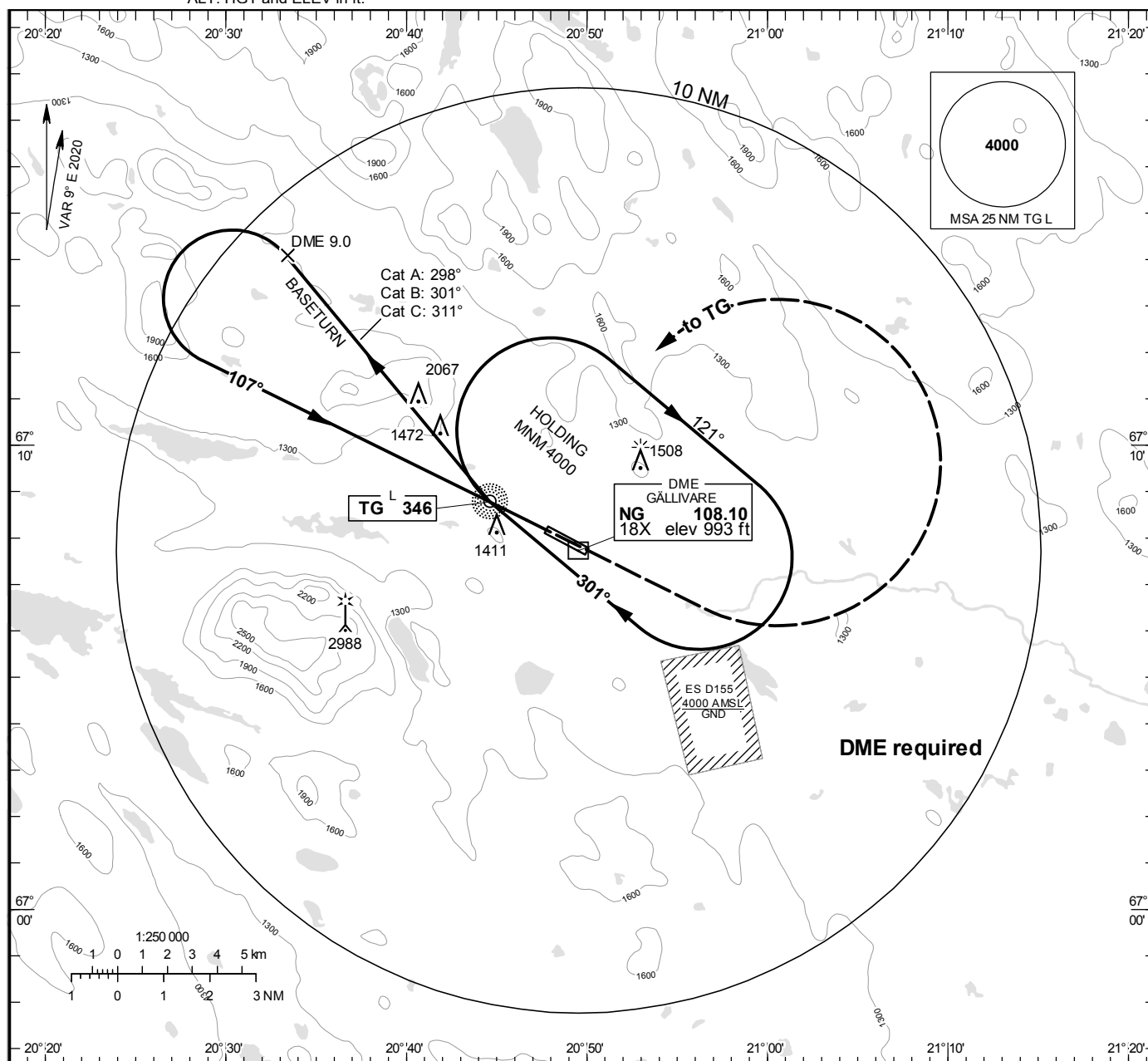


**GÄLLIVARE**  
**NDB RWY 12****INSTRUMENT  
APPROACH  
CHART – ICAO**

**THR ELEV 1027 ft, AD ELEV 1027 ft**  
OCH are related to THR.  
Circling OCH are related to AD ELEV.  
BRG are MAG  
ALT. HGT and ELEV in ft.

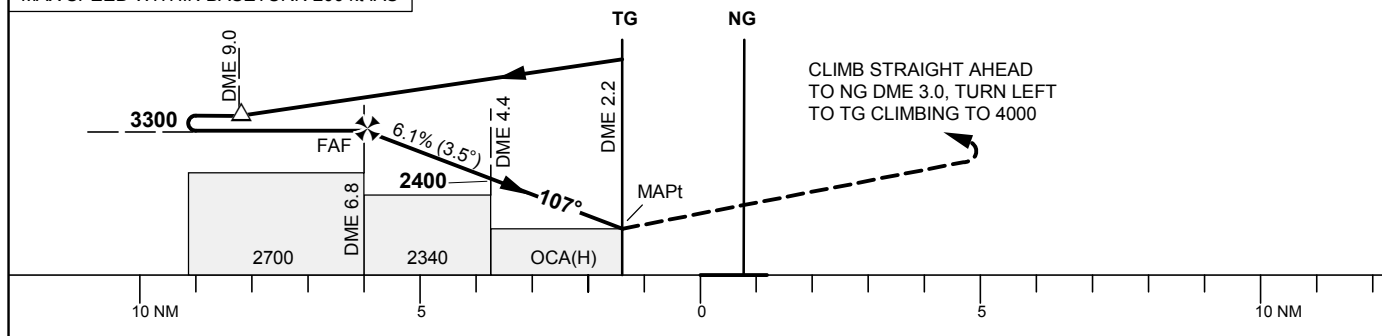
GÄLLIVARE  
INFORMATION

122.330



TA 5000 ft AMSL Final APCH line offset 2° Entry via TG or TG holding \*Timing of authorized for defining the MAPt

MAX SPEED WITHIN BASETURN 200 kt IAS



OCA (H)				Final approach	Distance FAF-MAPt 4.6 NM*						
Cat of ACFT	A	B	C	NG DME NM	6	5	4	3			
Straight-in Approach	1660 (630)			ALT	3020	2650	2270	1900			
Circling	1710 (680)	1810 (780)	2470 (1440)	GS	kt	80	100	120	140	160	180
				Time	min:s	3:27	2:46	2:18	1:58	1:43	1:32
				Rate of descent	ft/min	500	620	745	870	995	1115

CHANGE: Editorial